



# FACT SHEET



**HOTEL NAME:**  
The Phoenicia Malta

**CONTACT DETAILS:**

- The Mall, Floriana FRN 1478, Malta
- Tel: +356 2122 5241
- Fax: +356 2123 5254
- E mail: [info@phoeniciamalta.com](mailto:info@phoeniciamalta.com)
- For Reservations  
(Tel Direct: +356 2291 1023 - E mail: [res@phoeniciamalta.com](mailto:res@phoeniciamalta.com))

**AFFILIATION:**

- The Leading Hotels of the World (LHW)

**FACILITIES:**

- 24hr front desk and concierge service
- 24hr room service
- Hair dressing salon - Dean Gera
- Laundry service
- Bellman and porter service
- Car rental (available at concierge)
- Currency exchange
- Doctor on call
- Elevators
- Jewellers
- Multi-lingual staff
- Outdoor parking
- Valet parking
- Babysitting service (available upon request)

**LOCATION:**

This traditional and elegant property is situated just outside the city walls of Valletta, the business, diplomatic and cultural centre of Malta. Just a short stroll away from the magnificent auberges and palaces built by the Knights of St. John, museums and views overlooking the Grand Harbour.



**ACCESS:**

Malta International Airport is 8km away and a cheuffer service for airport transfers can be booked through the hotel. The average fare for a taxi transfer service is €27.00. Regular public bus transportation service is also available. More information on Malta's Public Transportation is available on <http://www.publictransport.com.mt>

**WIFI:**

Complimentary throughout the hotel

**CONFERENCE & BANQUETING:**

The hotel offers a host of business services and an excellent choice of meeting rooms and banqueting venues. Conference organisers have a choice of six meeting venues ranging from the Grand Ballroom with a capacity of up to 300 persons theatre style to the Knights Room for small boardroom meetings. A number of unique outdoor venues are also available for receptions, BBQs, gala dinners, weddings, etc...

**RECREATION:**

7½ acres of mature landscaped gardens with an outdoor fresh water infinity pool.

**CREDIT CARDS:**

All major credit cards accepted (Amex, Visa, MC, JCB).

**MALTA INFORMATION:**

The Maltese Archipelago lies virtually in the centre of the Mediterranean Sea, some 93kms south of the Italian island of Sicily, yet Malta is just a few hours flying time from most mainland European cities and has excellent intercontinental connections. Choose from scheduled services or charter flights, many of which offer a convenient departure point from European regional cities.

The national airline, Air Malta, operates flights to and from all the major airports in Europe, North Africa and the Middle East. Other airlines operating to Malta include Alitalia, Lufthansa, Emirates, SAS, Ryanair, EasyJet.

**TIME ZONE:**

GMT plus one hour (CET/CEST)

**CLIMATE:**

Malta's climate is strongly influenced by the sea and is typical of the Mediterranean. The Islands have a very sunny climate with a daily average of five to six hours sunshine in mid-winter to more than 12 hours in summer.

Winters are mild, with the occasional short chilly period brought about by the north and north-easterly winds from Central Europe.

Summers are dry and very sunny. Daytime temperatures in summer are often mitigated by cooling sea breezes, but in spring and autumn a very hot wind from Africa occasionally brings high temperatures.

Annual rainfall is low, averaging 578mm a year and the length of the dry season in summer is longer than in neighbouring Italy.

**CURRENCY:**

EURO (€)

**LANGUAGE:**

The official languages are Maltese and English. Maltese is a language of Semitic origin written in the Latin script. Over the centuries, it has incorporated many words derived from Italian, English and French.

**ELECTRICITY:**

The electrical supply is 240 volts, 50 Hertz. The British standard three-pin rectangular plug system is used.






---

## ROOMS

---

### SUPERIOR ROOMS:

18-23 sq.m., city view, opening windows, double or twin beds, non smoking, complimentary wifi, ac, combined bath and shower, safe, minibar, tea and coffee making facilities and LCD TV

### EXECUTIVE ROOMS:

23-28 sq.m., city view, balcony, double or twin beds, non-smoking, complimentary wifi, ac, combined bath and shower, safe, minibar, tea and coffee making facilities and LCD TV

### DELUXE HARBOUR VIEW ROOMS:

25 sq.m., harbour views, window or balcony, double or twin beds, non-smoking, complimentary wifi, ac, combined bath and shower, safe, minibar, tea and coffee making facilities and LCD TV

### VALLETTA SUITE:

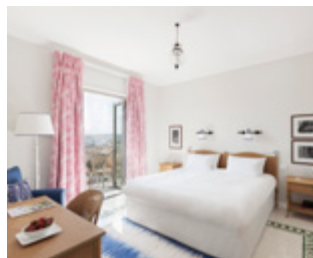
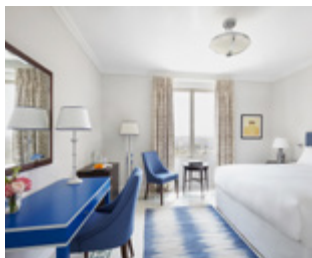
47 sq.m., Valletta views, sitting room, separate bedroom, 3 balconies, double beds, non-smoking, complimentary wifi, ac, bath and walk-in shower, safe, minibar, tea and coffee making facilities and 40 inch LCD TV

### HARBOUR VIEW SUITE:

56 sq.m., harbour views, sitting room, separate bedroom, non-smoking, complimentary wifi, bath and walk-in shower, safe, mini bar, tea and coffee making facilities and 40 inch LCD TV

### ROOM FURNISHING STYLES:

All rooms may have one of the following furnishing styles. Rooms types are not differentiated based on style.




---

## RESTAURANTS & BARS

---

### THE PHOENIX:

Open for breakfast, lunch and dinner. Al fresco option in summer (June to September) weather permitting.

Breakfast: Buffet 7:00 hrs to 10:30 hrs

Lunch: A la carte 12:30 hrs to 15:00 hrs

Dinner: A la carte 19:00 hrs to 22:00 hrs

The Phoenix Restaurant is the hotel's main restaurant, offering an elegant, warm and informal ambience with spectacular panoramic night-time views of the beautiful Marsamxett harbour.

### CAFÉ PHOENICIA:

Open all day 11:00 hrs to 22:30 hrs. A la carte. Al fresco option in summer (May to September) weather permitting.

A contemporary casual restaurant exuding a welcome that makes one relax instantly and settle down to enjoy delectable cuisine.

---

## BARS

---

### THE CLUB BAR:

Open 18:00 hrs till late

The Club Bar is the perfect place to unwind at the end of the day. Often described as the Phoenicia's best kept secret, the Club Bar features a traditional colonial design and an expertly designed cocktail list.

### PALM COURT LOUNGE:

Open 8:00 hrs to 22:00 hrs

Located in the heart of the hotel, the Palm Court Lounge is the perfect meeting place for a morning coffee, afternoon tea or an early evening cocktail before dinner.

---

## LEISURE

---

### OUTDOOR POOL:

Bastion Pool bar & restaurant open from June to September. Located a 250m walk from the hotel through the gardens.

### GARDEN:

7.5 acres of mature gardens



A MEMBER OF  
THE LEADING HOTELS  
OF THE WORLD